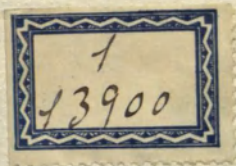


13<sup>a</sup>

399

+



Fonadilla <sup>u</sup> tres

de el Doctor

⌋

de el S.<sup>or</sup> Nisson.

⌋

R.12953  
10-4-62

*tonadilla*

Handwritten musical score for guitar and bass. The guitar part consists of three staves with a treble clef and a 6/8 time signature. The bass part consists of one staff with a bass clef and a 6/8 time signature. The music is written in a simple, rhythmic style with many rests.

*Andantino mui poco*

*voz amda*

Handwritten musical score for voice. The music is written on a single staff with a treble clef. The lyrics are written below the notes. The melody is simple and rhythmic, matching the 6/8 time signature of the instrumental parts.

oy gamevste per la mi a ius te per la mi a

ya vi ve que esta el doc to - r ya vi ve que esta el doctor

pri me ro pri me ro di ga le

*Criada*  
voi al instante al instante

uti p<sup>to</sup>

que aquí estoy is- si gale que aquí estoy is quemorins

que truu

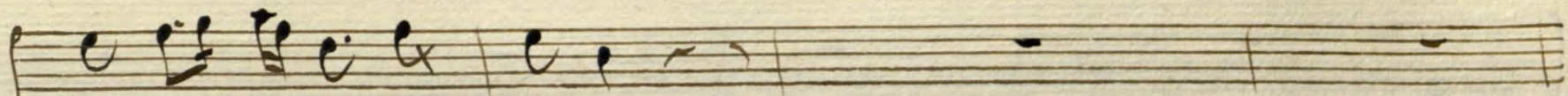
que chula ja ja ja

mii buenas

an que bu fon Ju Ju Ju

entreusted

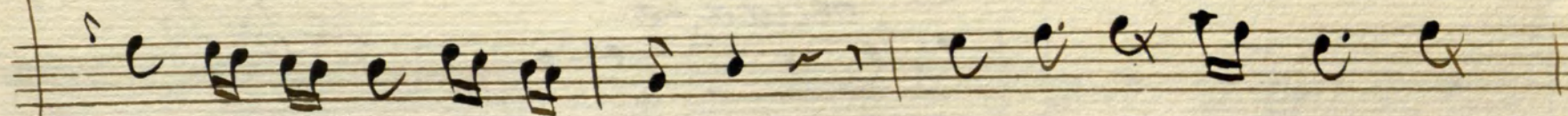
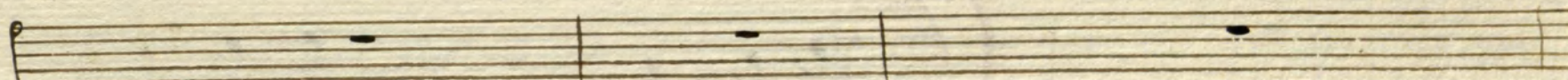
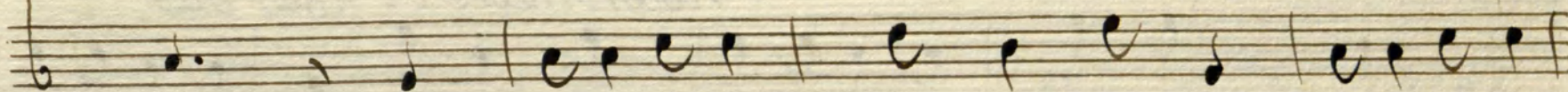
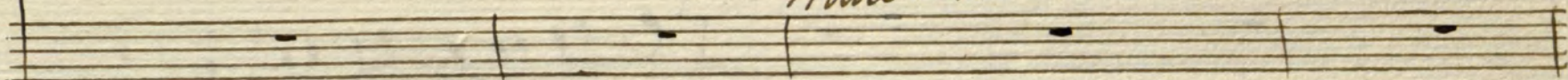
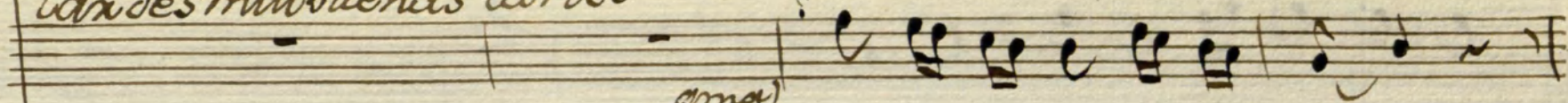
Poco ff



*tan des mui buenas tardes*

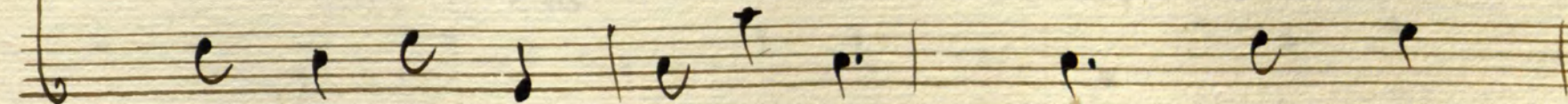
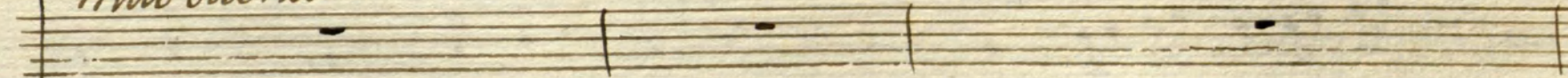
*orna)*

*mui buenas os las de Dios*



*mui buenas os las de Dios*

*muchacha aaxissima una*



Handwritten musical score on aged paper, featuring a system of six staves. The first two staves are grouped by a brace on the left. The lyrics are written in a cursive hand, alternating between Spanish and Italian. The notes are written in a style characteristic of 18th or 19th-century manuscripts, with some use of ligatures and slurs. The lyrics include: "si lla axxi mavna si lla", "noaxxi mare vi noer dos", "bella ñ fe", "la la la", "buen mozo me clave", "noaxxi mare vi noer dos", "bes co zon", and "lu lu".

si lla axxi mavna si lla

noaxxi mare vi noer dos

bella ñ fe la la la

buen mozo me clave

noaxxi mare vi noer dos

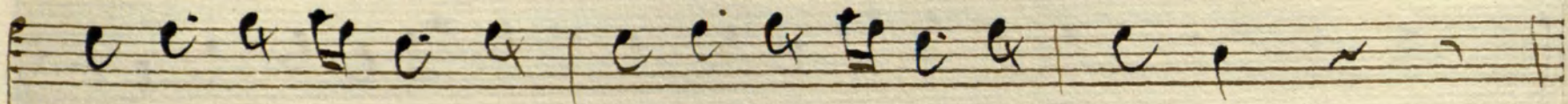
bes co zon lu lu

*e enfermidade pa de ze di ga ve pa de ze*

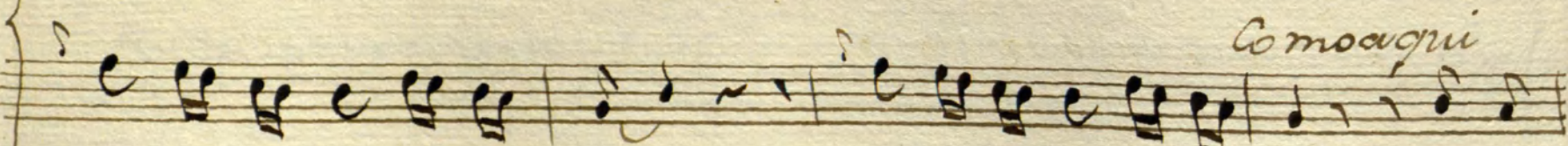
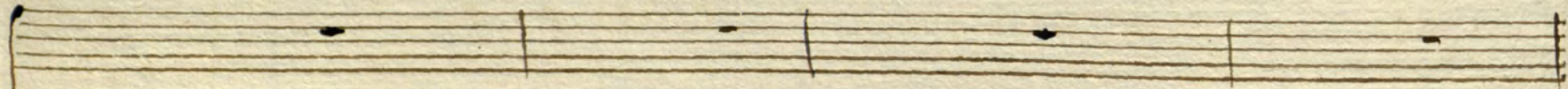
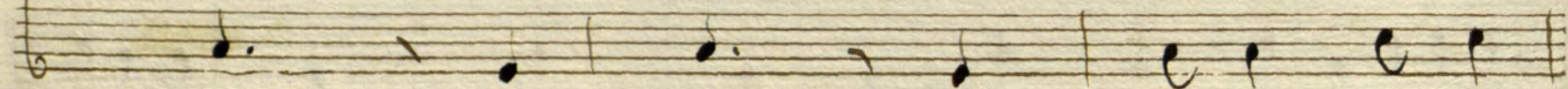
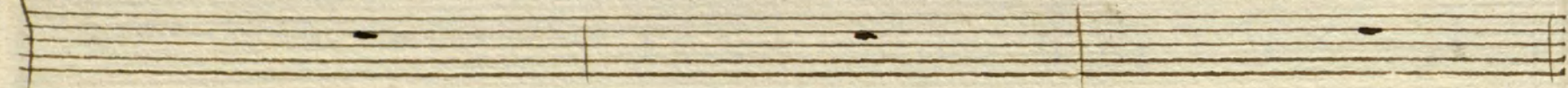
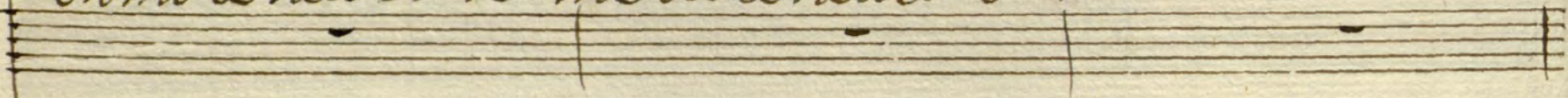
*In*  
*pno* *poco fe*

*io dis curro que esa mo-x io discurno que esa mo-r*

*io dis curro que esa mo-x io discurno que esa mo-r*



en mi te neisel re me dio te neisel re me dio



Como aqui

e se tambien busco io e se tambien busco io Como





*Presto*

bueno va tu tu tu  
es no *Presto* es te mozo a de ser mio  
si la la la *Presto*  
se re de en tra m ba u mo re nas ies  
no se ra vivien do yo-

toa cabe se redent xamba morenas i estoa cabe

yaaca bo yaaca

a cantar quierestu sea cabo a bramas

por mi di si si si

bo tambien io no no no

Detailed description: This is a page of handwritten musical notation on aged paper. It features five systems of music, each consisting of a vocal line and a piano accompaniment line. The lyrics are written in Spanish. The notation includes various note values, rests, and dynamic markings such as slurs and accents. The handwriting is in a cursive style typical of 18th or 19th-century manuscripts.

los 3

o - id - me por ca ri dad la - to na di lla nueva que

vi no de por tu gal que la tra y mi do to - r quan

do me vino a curar que es la que canto se ñores (Jo xi co)

y la voia ca ban que es la que canto se ñores (Jo xi co)

The image shows a page of handwritten musical notation on aged paper. It consists of three systems of staves. Each system has three staves: two upper staves for instrumental parts and one lower staff for the vocal line. The notation is in a cursive, historical style. The lyrics are written in a cursive hand below the vocal staves. The first system of lyrics is "do me vino a curar que es la que canto se ñores (Jo xi co)". The second system of lyrics is "y la voia ca ban que es la que canto se ñores (Jo xi co)". There are double bar lines at the beginning of each system and at the end of the second system. The paper shows signs of age, including some staining and discoloration.

Handwritten musical notation for the first system, consisting of three staves. Each staff contains rhythmic patterns of eighth and sixteenth notes, with some notes beamed together and others marked with accents.

*y la voi à ca bar be - r doncazuela mia*

Handwritten musical notation for the second system. The top part is a vocal line with lyrics. The bottom part is a guitar accompaniment line. The word "Punteado" is written below the guitar line.

*Punteado*

Handwritten musical notation for the third system, consisting of three staves with rhythmic patterns of eighth and sixteenth notes.

Handwritten musical notation for the fourth system, consisting of three staves with rhythmic patterns of eighth and sixteenth notes.

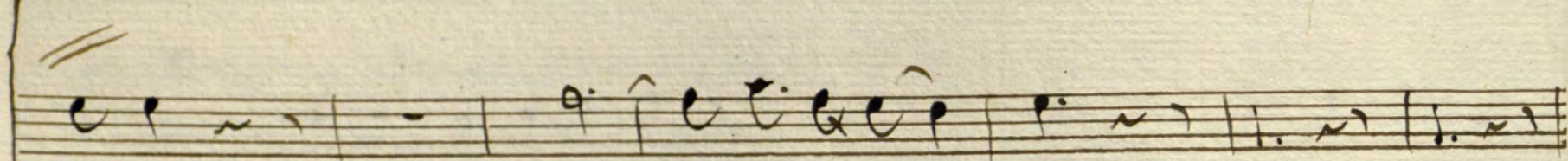
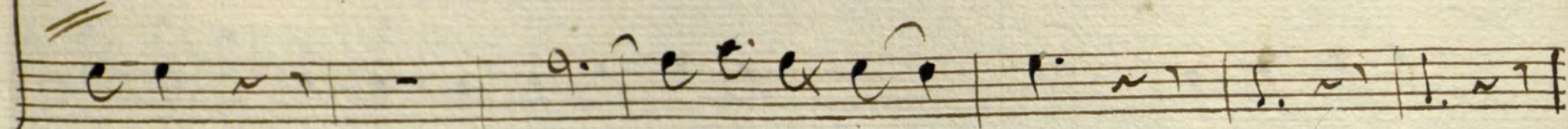
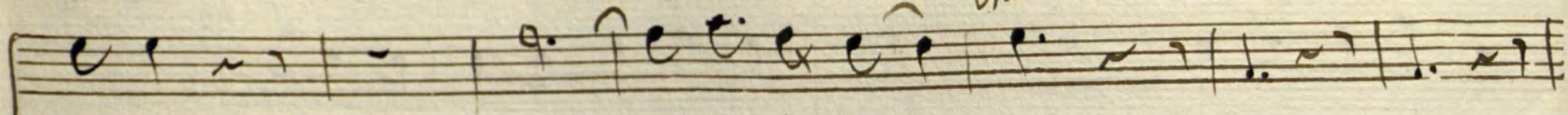
Handwritten musical notation for the fifth system, consisting of three staves with rhythmic patterns of eighth and sixteenth notes.

*be - r donmada mas*

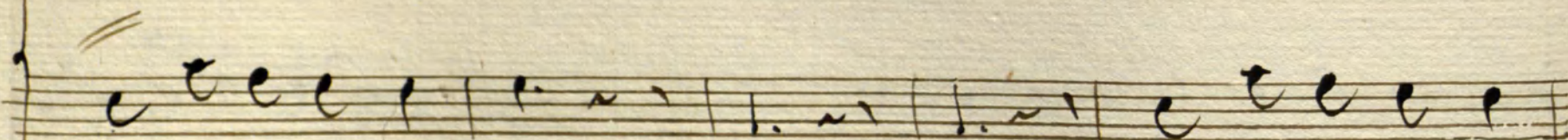
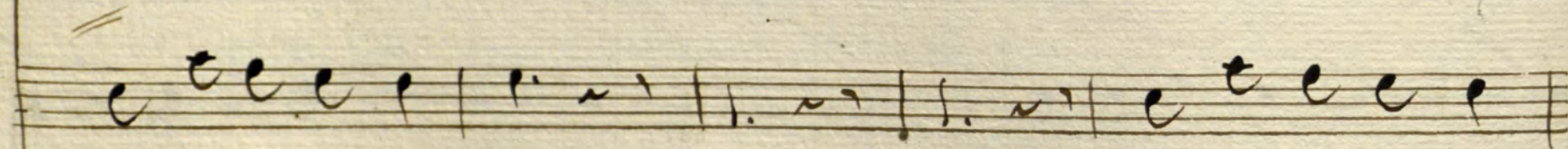
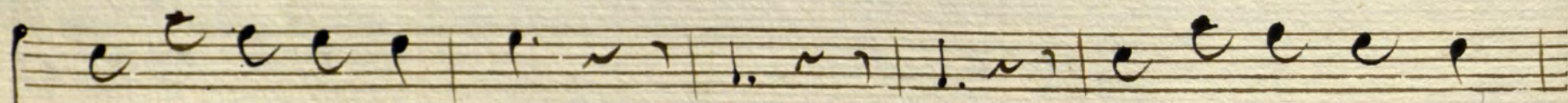
*be - r donluneta*

Handwritten musical notation for the sixth system. The top part is a vocal line with lyrics. The bottom part is a guitar accompaniment line.

Mas All<sup>o</sup>



mi a e - l barroy gra - dous Je Ja



y la voi a ca bar Je Ja y la voi a ca

Handwritten musical score for voice and piano, first system. The score consists of five staves. The top four staves are for the piano accompaniment, and the fifth staff is for the voice. The lyrics are written in cursive below the voice staff. The first two staves of the piano part have double slashes at the beginning, indicating they are to be played together. The lyrics are: *bar si si y la voi a ca bar si si y la voi à ca*. The first staff of the piano part has a dynamic marking *fmo* and the second staff has a dynamic marking *fe*.

Handwritten musical score for voice and piano, second system. The score consists of five staves. The top four staves are for the piano accompaniment, and the fifth staff is for the voice. The lyrics are written in cursive below the voice staff. The first two staves of the piano part have double slashes at the beginning, indicating they are to be played together. The lyrics are: *bar.*. A blue rectangular stamp with the number 13900 is located on the right side of the second system, overlapping the piano staves.

