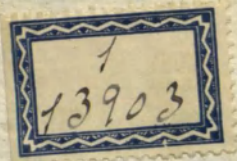


18^a
430

+

Tonadilla a Duo.



Mimoxeno me llama su alma.

De. Dⁿ Luis Mison.

R.12956
70.4.61

theresa

Mi mo re no me

All^{to}

Rosa

lla ma su al ma Yo lla mo a mi mo re no mi cie

the^a

lo ai q^e Chu lo que be lloy gua po, c-c. es el ni ño de

Rosa

quien io a blo ai que er mo so que gua poy be llo, c-

las dos

C- es se ño res mi ma la gue ño, c- c, di q.^e Li pi ri

Li pe te - - - ra es es ta to na di lli ta

the.^a

nue - ba ai que Li pi ri Li pi ta pa, c,

Vo sa

c, so lo the re si ta la Can ta c- c- ay que

ci pi ri ci pi te ra c- c- que la can ta la

the.^a

vo sa le a, c- c. Mo ve ni mo ve ni to mi -

Vo sa

o o ye me chu lo que te di - go e le c- a la

the.^a

c- a la Ion da c- e le c- o lo, c- a la ro ro -

Vosa

the.^a

c. a la c-e le, c-ya no me quie res c- e le

las 2.

C- o lo c. te quie vo so lo c- e le, c- e le,

c.. a la c. ai de mi ay

And.^{te}

Por di vex ti mis Pe nas q.^e xi do Due ño

Canto la to na di lla del ma la que ño se ro Pa

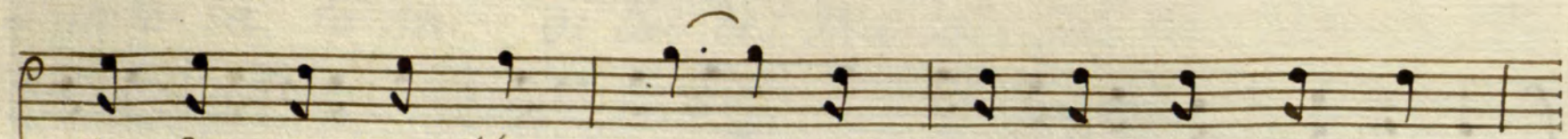
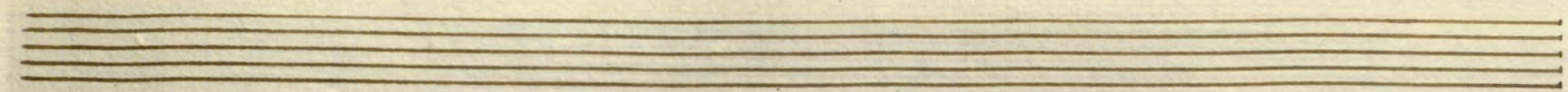
ra a - ca bar la es tar - a ten tos es tar - a

Att^o Poco

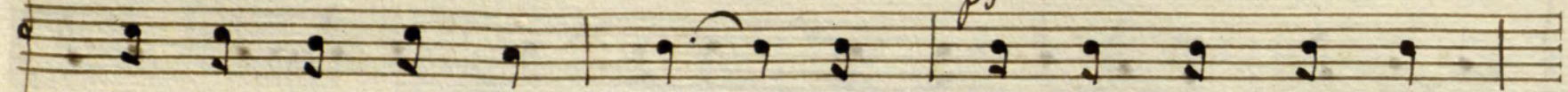
ten tos a - dios mos - que te - ro mi - a - dios mos - que te - ro

o Prenda de mí
mí - o Prenda de mí vida mí chulo mianelo
mi gloxía mi Lie lo noolbi des Pex la mi - a

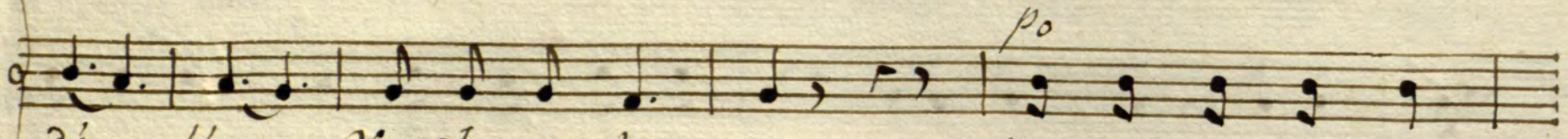
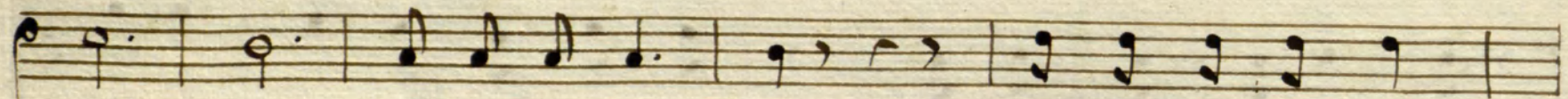
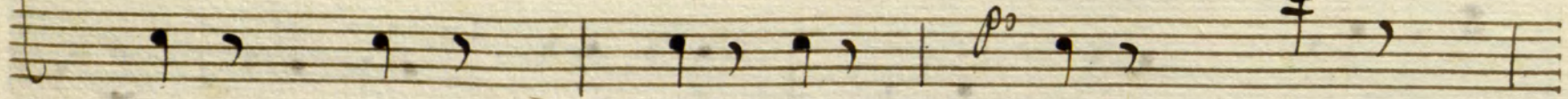
The image shows a page of handwritten musical notation on aged paper. It features a vocal line with lyrics in Spanish and a piano accompaniment. The lyrics are: "o Prenda de mí", "mí - o Prenda de mí vida mí chulo mianelo", and "mi gloxía mi Lie lo noolbi des Pex la mi - a". The notation includes various note values, rests, and bar lines. The paper shows signs of age, including some staining and discoloration.



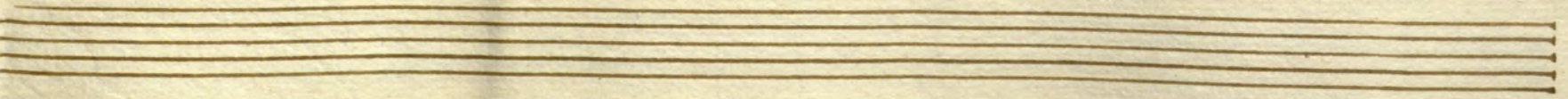
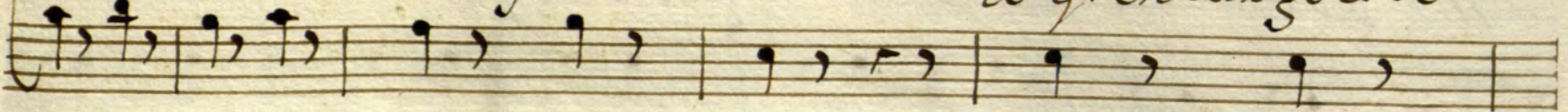
tu q.^e xi da the xe - sa



tua ma da vo sa le - a *po* y sal dxan to na



di - llas - ve chu pe te xas *po* lo q.^e en Car go er se



And.^{te}

A musical staff with a treble clef, containing several measures of music. It starts with a whole note, followed by a half note, and then a series of eighth notes. There are some accidentals (sharps and flats) and a fermata over the final note.

A musical staff with a treble clef, containing several measures of music. It features a triplet of eighth notes and a fermata over the final note.

cre to - na die lo se pa si la to na di lli taes co

A musical staff with a treble clef, containing several measures of music. It features a triplet of eighth notes and a fermata over the final note.

A musical staff with a treble clef, containing several measures of music. It features a triplet of eighth notes and a fermata over the final note.

sa bue na venix to dos ma ña na q.^ea quior es pe

A musical staff with a treble clef, containing several measures of music. It features a triplet of eighth notes and a fermata over the final note.

sa bue na

A musical staff with a treble clef, containing several measures of music. It features a triplet of eighth notes and a fermata over the final note.

The image shows a handwritten musical score on aged paper. It consists of two systems of staves. The first system has three staves: a vocal line with lyrics, a piano accompaniment line, and a lower staff. The second system also has three staves: a vocal line with lyrics, a violin part labeled 'Vn.^s', and a lower staff. The lyrics are written in a cursive hand. The music is in a single system with a key signature of one flat and a common time signature. The score includes various musical notations such as notes, rests, and dynamic markings like 'p' and 'tr'.

xa si la to na di lí ta er co sa bue
na ve nix to dos ma ña na queda quio es pe
na

xa a dios mi vi da poxq^e meausen to ia ca va la to na

di ta del ma la que ño ia ca va la to na di ta del

ma la que ño del ma la que ño

Fin

