

RODA Leg 42
626

~~Roda Varis
626~~

PITO DE MANDO

INVENTADO

POR

ENRIQUE MARZO.

TOQUES DE ORDENANZA

DE

INFANTERIA.

Depositado.

Pr: 4 Rs:

EDITOR PROPIETARIO

D. ANTONIO ROMERO Y ANDIA.

Madrid. Calle de Preciados n.º 1.

Almacén de Música, Pianos, Órganos e instrumentos

Para Banda Militar.

RODA Aug 42
626



PITO DE MANDO

INVENTADO

POR

ENRIQUE MARZO.

TOQUES DE ORDENANZA

DE

INFANTERIA.

Depositado.

Pr: 4 Rs:

EDITOR PROPIETARIO

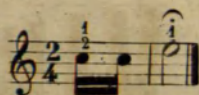
D. ANTONIO ROMERO Y ANDIA.


Madrid. Calle de Preciados n.º 1.

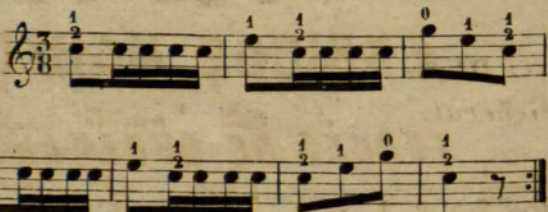
Almacen de Música, Pianos, Órganos é instrumentos

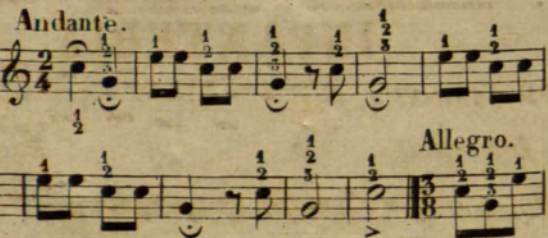
Para Banda Militar.

TOQUES DE ORDENANZA.

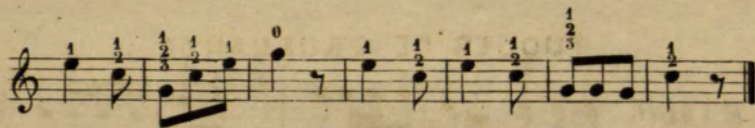
ATENCIÓN. 

MARCHA
Regular. 

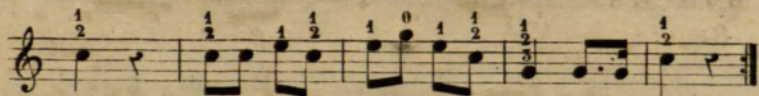
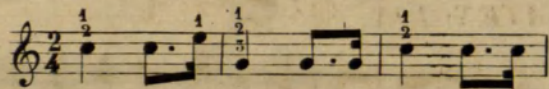
LLAMADA
de Infantes. 

ORACION. 

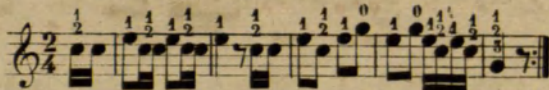
Allegro. 



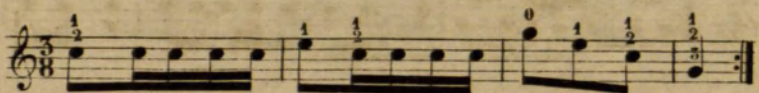
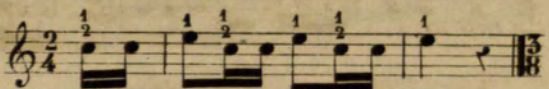
MARCHA
de Frente.



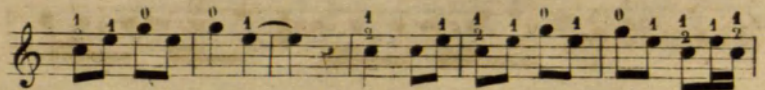
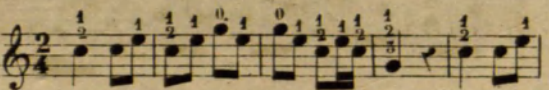
ORDEN.

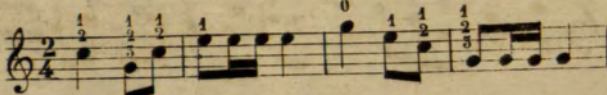


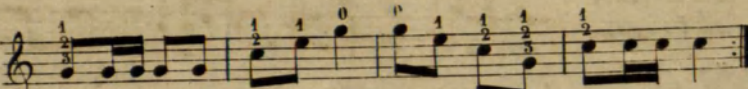
ORDEN
General.

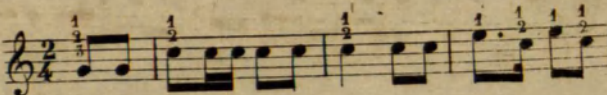


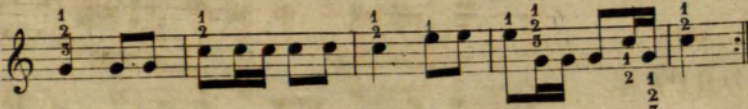
PROVISIONES.

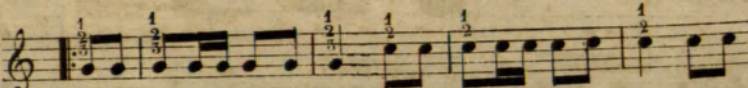


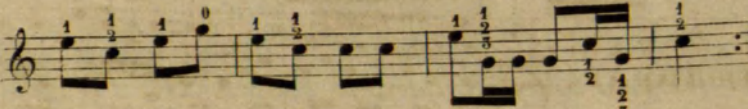
BANDO.  Musical notation for the first staff of the BANDO section, starting with a treble clef and a 2/4 time signature. The melody begins with a quarter note G4, followed by eighth notes A4-B4, and continues with various rhythmic patterns and fingerings (1, 2, 3, 4, 0, 1, 2, 3).

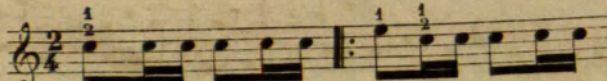
 Musical notation for the second staff of the BANDO section, continuing the melody with quarter and eighth notes, and including fingerings such as 1, 2, 4, 0, 1, 2, 3, 4.

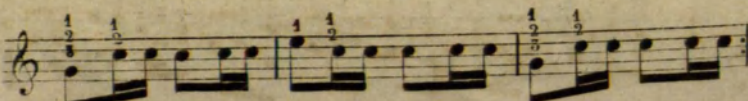
FAJINA.  Musical notation for the first staff of the FAJINA section, starting with a treble clef and a 2/4 time signature. The melody is characterized by a steady eighth-note rhythm with fingerings 1, 2, 3, 4.

 Musical notation for the second staff of the FAJINA section, featuring a melodic line with quarter and eighth notes, and fingerings 1, 2, 4, 1, 2, 3, 4.

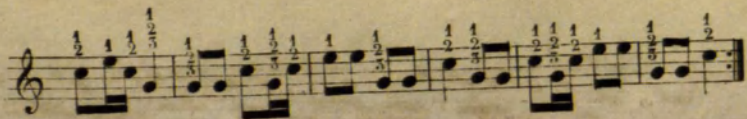
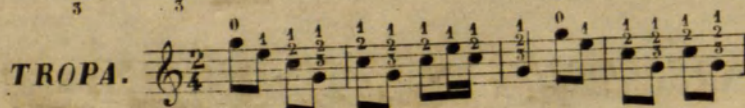
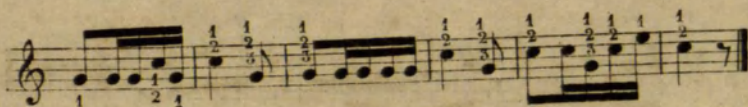
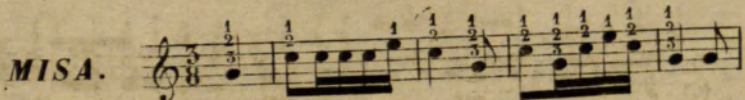
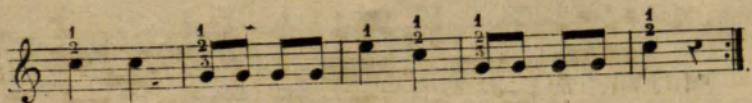
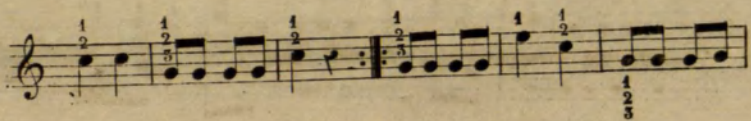
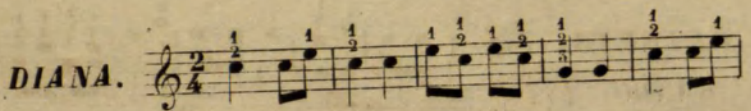
 Musical notation for the third staff of the FAJINA section, continuing the eighth-note melody with fingerings 1, 2, 4, 1, 2, 3, 4.

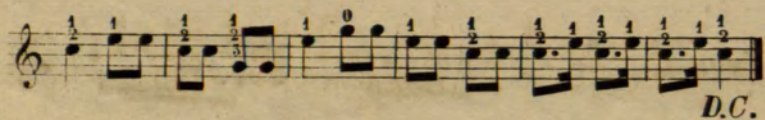
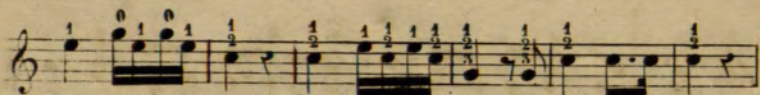
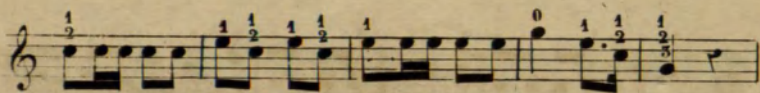
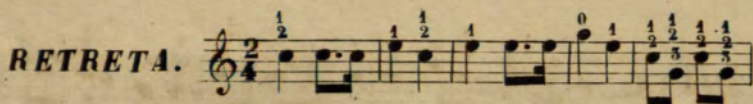
 Musical notation for the fourth staff of the FAJINA section, ending with a repeat sign. The melody includes fingerings 1, 2, 4, 0, 1, 2, 3, 4, 1, 2, 3, 4.

ATAQUE.  Musical notation for the first staff of the ATAQUE section, starting with a treble clef and a 2/4 time signature. The melody consists of eighth notes with fingerings 1, 2, 3, 4.

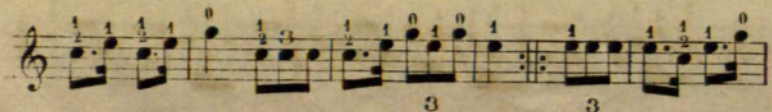
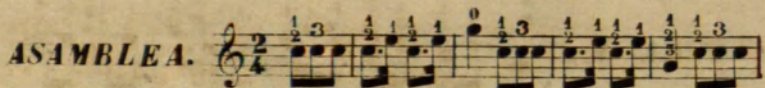
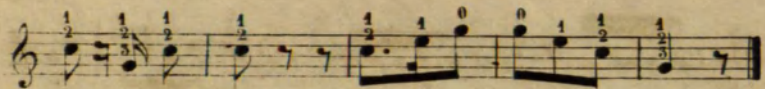
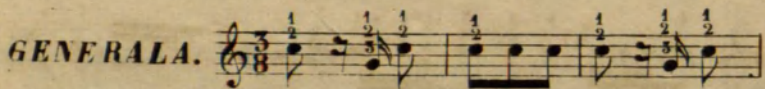
 Musical notation for the second staff of the ATAQUE section, continuing the eighth-note melody with fingerings 1, 2, 3, 4, 1, 2, 3, 4.

RCSMVI... Copyright © Real Conservatorio Superior de Música de Madrid. Informacion sobre copyright: hab@conservatorio.madrid.es





D.C.



3

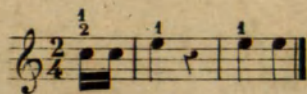
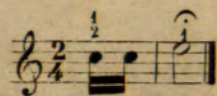
3

ESCUADRA.

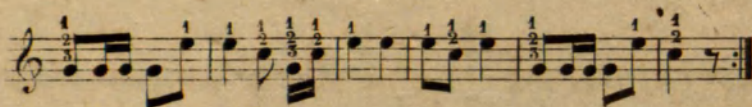
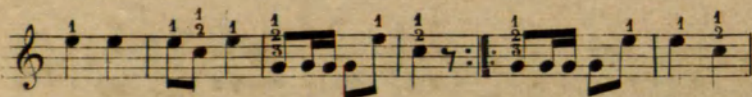
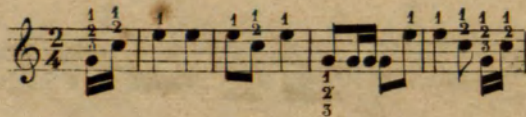
COMPañIA.

BATALLON.

LISTA.

PARTE.**SILENCIO.**

UNA MARCHA
 REBOBLADA
 Ú ORDINARIA.

**GOLPES.**