

1  
9142  
(30)

Duettino

Per Due Soprani

O' Angels Inzenza.

R<sup>o</sup> 25967

24-5-67

Andantino Expressivo.

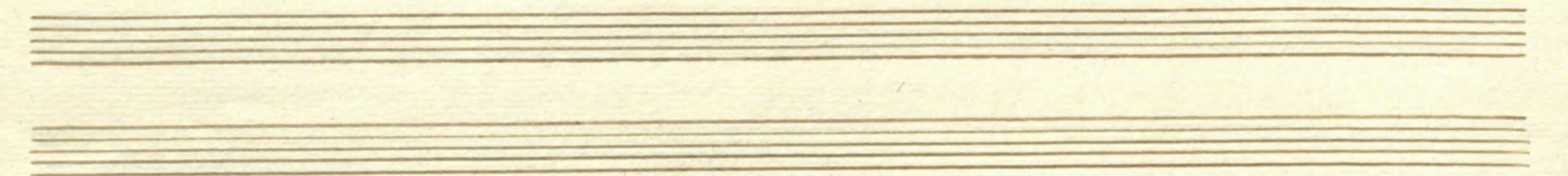
Flute 1.<sup>o</sup>  
Flute 2.<sup>o</sup>  
Cristofano

La più dol-ce e fi-da a-man-te Vi-ce oh Dio m'ab-ban-do - no m'ab-ban-do -

no - - - Vi - ce oh Di - o m'ab - ban - do - no

La più dol-ce e fi-da a-man-te Vi-ce oh Dio m'ab-ban-do - no m'ab-ban-do -

Handwritten musical score for the first system, featuring vocal lines and piano accompaniment. The lyrics are: *e pur d'es-ser mi co- stan-te mit-le* (top line) and *no e pur d'es-ser mi co- stan-te mi lle vol te* (middle line). The piano part includes dynamic markings such as *f*, *p*, and *col.* (colored).



Handwritten musical score for the second system, featuring vocal lines and piano accompaniment. The lyrics are: *vol-te mil-le* (top line), *mi-giu-rò* (middle line), and *m'abban-do-no* (bottom line). The piano part includes dynamic markings such as *rallent.* (rallentando) and *colle parti* (colle parti).

Rec:

mi abban-do - no

pes - so col da dol de -

*p.* *cres.* *fz.*

- si o

l'ho sen-ti-ta so-pi - nat.

pes - so col da dol de -

*p.* *cres.* *fz.*

Handwritten musical score for the first system. It consists of two staves. The upper staff contains a vocal line with lyrics: "si - o l'ho ren - ti - ta sor - pi - rar". The lower staff contains a piano accompaniment. The music is written in a single system with five measures. The first measure has a treble clef and a key signature of one sharp (F#). The piano part features chords and melodic lines, with a *pp* dynamic marking in the final measure.



Handwritten musical score for the second system. It consists of two staves. The upper staff contains a vocal line with lyrics: "ma - ro no - me mi - o fra scoi lab - bri re pli car si re pli - car". The lower staff contains a piano accompaniment. The music is written in a single system with five measures. The first measure has a treble clef and a key signature of one sharp (F#). The piano part features chords and melodic lines, with a *pp* dynamic marking in the final measure.

Handwritten musical score for the first system, featuring a vocal line and a piano accompaniment line. The lyrics are: *fra suoi lab - bri - - re - pli - car e l'a -*

*ma - to no - me mi - o fra suoi lab - bri re - pli - car si re - pli - car e l'a*

Handwritten musical score for the second system, continuing the vocal line and piano accompaniment. The lyrics are: *- ma - to - no - me mi - o fra suoi lab - bri re - pli - car si re - pli - car e - l'a*

*- ma to no me mi - o fra suoi lab - bri re - pli - car e - l'a*

ma-to no-me mi-o fra suoi rab-bri re = pli-car  
ma-to no-me mi-o fra suoi rab-bri - re - pli - car

The first system of the handwritten musical score consists of three staves. The top two staves are for vocal parts, and the bottom staff is for piano accompaniment. The lyrics are written below the vocal staves. The music is in a key with one sharp (F#) and a common time signature (C). The vocal lines are written in a cursive, handwritten style. The piano accompaniment features a simple harmonic structure with some grace notes.

si re-pli-car  
si re-pli-car.

The second system of the handwritten musical score continues the vocal and piano parts. It consists of three staves. The lyrics are written below the vocal staves. The music continues in the same key and time signature. The vocal lines end with a fermata. The piano accompaniment concludes with a final chord and a fermata.

Fin.

