

7/15/17
Trompa 1^a

DUO

per

Don Luis Font



11055

11055

11055

11055

11055

Duo

Don Luis Font

R. 58.331
14-Marzo-1990

Andte

Minuto

Handwritten musical notation on a single staff. It begins with a treble clef and a key signature of one sharp (F#). The notes are: G4, A4, B4, C5, D5, E5, F#5, G5, A5, B5, C6, D6, E6, F#6, G6, A6, B6, C7. The word "cresce" is written below the first three notes, and "mas" is written below the last three notes. There are dynamic markings *f* and *ff* at the end of the staff.

Handwritten musical notation on a single staff. It begins with a treble clef and a key signature of one sharp (F#). The notes are: G4, A4, B4, C5, D5, E5, F#5, G5, A5, B5, C6, D6, E6, F#6, G6, A6, B6, C7. The word "hasta" is written below the notes, and "Fin" is written at the end of the staff.

Handwritten musical notation on a single staff. It begins with a treble clef and a key signature of one sharp (F#). The notes are: G4, A4, B4, C5, D5, E5, F#5, G5, A5, B5, C6, D6, E6, F#6, G6, A6, B6, C7. The word "And" is written at the beginning, and "no" is written above the first few notes. The time signature is 8/8.

Handwritten musical notation on a single staff. It begins with a treble clef and a key signature of one sharp (F#). The notes are: G4, A4, B4, C5, D5, E5, F#5, G5, A5, B5, C6, D6, E6, F#6, G6, A6, B6, C7.

Handwritten musical notation on a single staff. It begins with a treble clef and a key signature of one sharp (F#). The notes are: G4, A4, B4, C5, D5, E5, F#5, G5, A5, B5, C6, D6, E6, F#6, G6, A6, B6, C7. The word "Fin" is written above the notes.

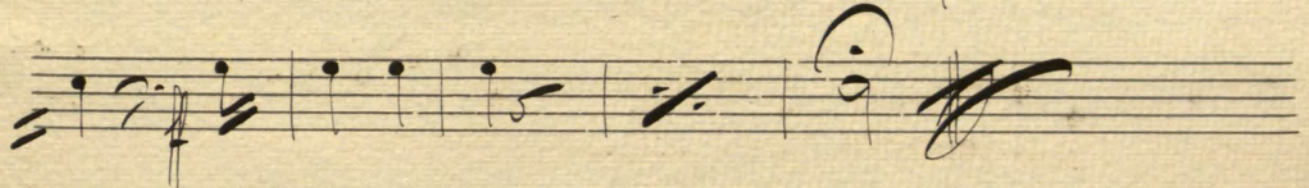
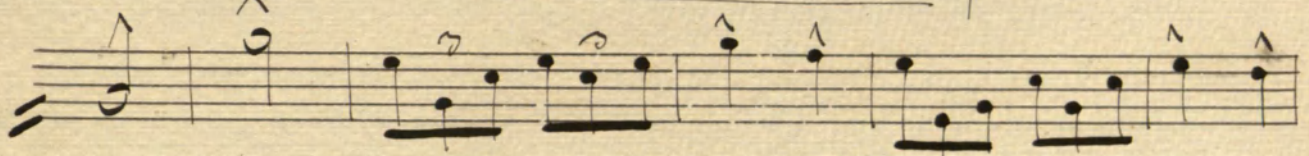
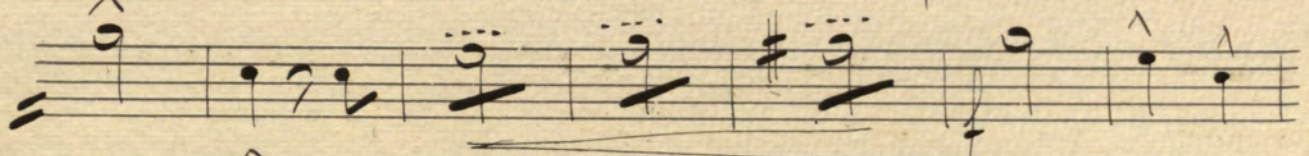
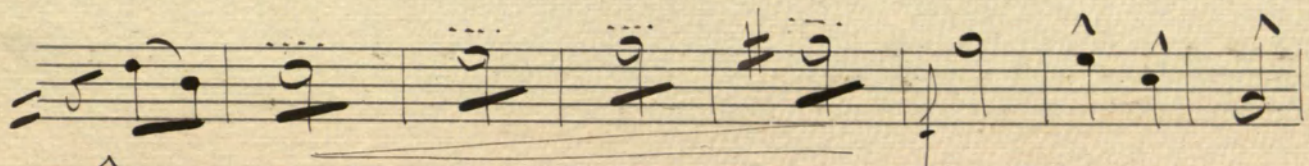
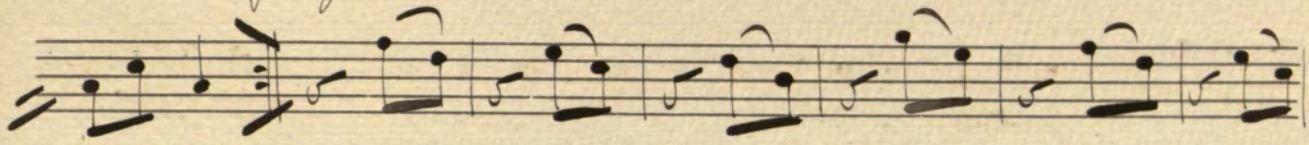
Handwritten musical notation on a single staff. It begins with a treble clef and a key signature of one sharp (F#). The notes are: G4, A4, B4, C5, D5, E5, F#5, G5, A5, B5, C6, D6, E6, F#6, G6, A6, B6, C7.

Handwritten musical notation on a single staff. It begins with a treble clef and a key signature of one sharp (F#). The notes are: G4, A4, B4, C5, D5, E5, F#5, G5, A5, B5, C6, D6, E6, F#6, G6, A6, B6, C7.

Handwritten musical notation on a single staff. It begins with a treble clef and a key signature of one sharp (F#). The notes are: G4, A4, B4, C5, D5, E5, F#5, G5, A5, B5, C6, D6, E6, F#6, G6, A6, B6, C7. The word "hasta" is written below the notes, and "Fin" is written at the end of the staff.

Handwritten signature or initials, possibly "J. S. P.", written in a cursive style.

vivo *Ligero*



A page of ten blank musical staves, each consisting of five horizontal lines, arranged vertically on aged paper. The staves are evenly spaced and occupy most of the page's width and height. The paper has a slightly textured, off-white appearance with some minor discoloration and faint smudges.

Trompa 2a

Duo
per

Don Luis Font

Duo

por
Don Luis Font

R. 57.331
14-Marzo-1990

And^{te}

Minuete

And^{no} # 2/8

Handwritten musical notation on a five-line staff.

Handwritten musical notation on a five-line staff.

Handwritten musical notation on a five-line staff, ending with the instruction "hasta fin".

Martoso 2/4

Handwritten musical notation on a five-line staff.

Handwritten musical notation on a five-line staff.

Handwritten musical notation on a five-line staff, ending with the instruction "tutti".

Mod^{to} 2/4

Handwritten musical notation on a five-line staff.

Handwritten musical notation on a five-line staff.

Handwritten musical notation on a five-line staff.

Handwritten signature or initials in the bottom right corner.

RCSM M REAL CONSERVATORIO SUPERIOR DE MÚSICA DE MADRID. Copyright © Madrid's Royal Music Conservatory. Information about copyright - biblioteca@rcsmm.eu

Handwritten musical score on ten staves. The notation includes various rhythmic values, accidentals, and dynamic markings such as "cresc." and "vivo". The manuscript is written in dark ink on aged paper.

cresc.

vivo

liger

